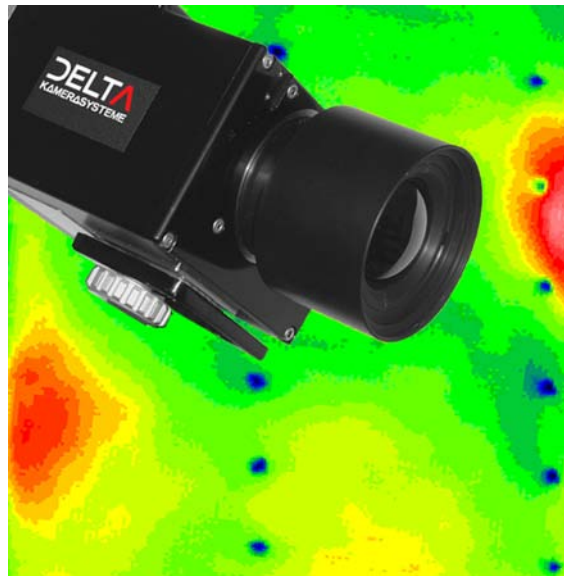




IR-Camera IR-WRC314



IR-Camera IR-WRC314 for industrial Application

Technical Features	
IR-Camera	Type IR-WRC314
Type of detector, image format	uncooled Micro-Bolometer (focal plan array) 320x240 Pixel
Spectral sensitivity	3-5 / 7,5-14 μm (wide range sensor)
Temperature measurement range	-40 °C ... 1200 °C (optional upto 2000° C)
Thermal resolution	< 200 mK / < 90 mK
Measurement accuracy	\pm 2K bzw. \pm 2%, long term stabilized
Emissivity	adjustable from 0,1 to 1,0 in steps of 0,01
IR Image rate	50 Hz
Dynamic range	16 bit
Interface	IEEE-1394
Automatic functions	Auto image, Image improvement
Dimensions	75 x 100 x 110 mm (HxWxD) without lens
Weight	appr. 1 kg (without lens)
Power supply	9 – 24 V DC, 1,5 A
Protection	IP 54
Operation temperature range	-10° ... + 50° C
Lenses	
For spectral range 3 – 5 μm	Furnace lens, 4,7 mm (94° diagonal view) Standard lens, 2.8/25 mm FOV 32° x 25°
For spectral range 7,5 - 14 μm	1.0 / 12,5 mm FOV 64° x 50° 1.0 / 25,0 mm FOV 32° x 25° 1.0 / 50,0 mm FOV 16° x 12,5 ° 1.0 / 100 mm FOV 8° x 6,2°
Filters	
Flame filter	Bandpass, longwave-, shortwave-filters, broad-bandpass filters
Spezial filters	as per requirement
Image transmission	
FireWire connection	appr. 2...5 m cable to local PC
	app. > 500 m via optical fiber connection
Software	
Standard	Remote camera control, image transmission
Non-standard	Software according to customer requirements